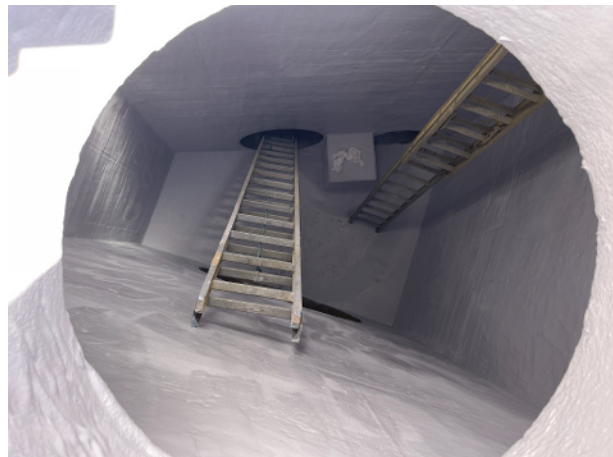


Interceptor Box Rehabilitation: Wichita I-135 Highway Project



Project Details

Kansas-based contractor Mayer Specialty Services, an Epoxytec Certified Applicator, applied Epoxytec Series 456 CPP Sprayliner to line new construction sanitary structures on a Wichita, KS interceptor line. The project, completed in May 2025, required surface preparation to SSPC-SP13/NACE 6 standards with a minimum ICRI-CSP 5 profile. The coating was applied at 125 mils dry film thickness using heated, plural-component spray equipment.

As a high-strength applied and bonded lining solution, Epoxytec CPP Sprayliner is engineered for both new construction and the rehabilitation of deteriorated infrastructure. By forming a monolithic, ultra-high build lining, CPP Sprayliner provides long-term protection against inflow and infiltration (I&I) and shields concrete substrates from corrosive sewer gases (H₂S exposure). This installation enhances structural integrity and ensures an extended service life for critical collection system assets.

Featured Products

Series 456 | CPP Sprayliner

Project Information

Location
Wichita, Kansas

Completion Date
May 2025

Structure
Sanitary Interceptor Boxes

Owner
City/State Infrastructure (I-135 Highway Project)

Applicator
Mayer Specialty Services, LLC



PART OF THE TNEMEC FAMILY OF COATINGS

123 West 23rd Avenue, North Kansas City, MO 64116 USA +1 816-483-3400 epoxytec.com