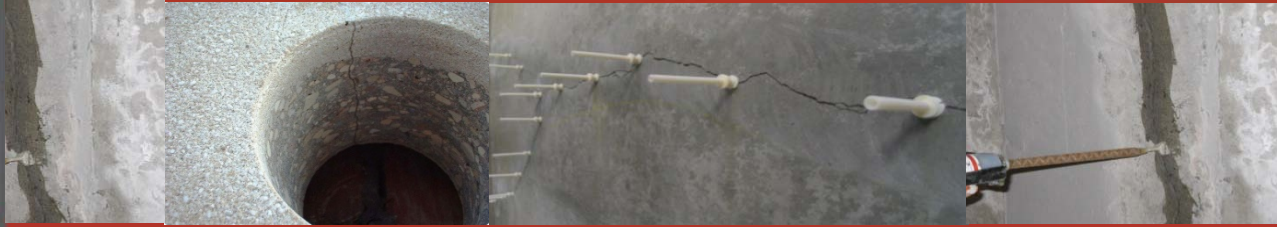


CPP™ Gel: Crack Injection



Revised 8-23-17

Compound Polymer Paste (crack repair version)

Description

Epoxytec CPP™ Gel: Crack Repair is a two-component moisture insensitive, highly adhesive, chemical resistant, 100% solids, high strength epoxy paste and reinforced structural-grade epoxy. Similar to “standard” CPP once cured, this version is packaged more conveniently for Crack Injection and repair by extrusion. Contains no solvents. CPP™ Gel: Crack Injection bonds to concrete, steel, wood, brick, some plastics and most construction materials. Application temperature range is between 40 °F (4 °C) and 100 °F (38 °C).

Typical Uses

- Ideal bonding agent for most materials including concrete, brick, wood, stone, block and other substrates
- May be used as an adhesive or filler
- Capping paste and injection port adhesive for crack injection process
- Non-sag patching material for cracks and small spalls
- Ideal for overhead and vertical repairs

Features

CPP™ Gel: Crack Injection:

- Easily dispensable from most caulking guns
- Rapid initial 3 hour cure at room temperature
- Moisture insensitive and may be used on damp surfaces

Storage & Handling

- Shelf life: 24 months, sealed
- Storage: Store in a dry area away from direct sunlight
- Storage temperature: 40 °F (4 °C) and 90 °F (32 °C)

Packaging & Color

- Package Size: 8.6 oz. (254 ml) Cartridge
- Color & Ratio: Part A (Resin): White, Part B (Hardener): Dark Gray, Mixed: Concrete Gray. Mix Ratio: 1:1 by volume

Surface Preparation

Concrete: Prepare the concrete by abrasive blasting, high pressure water cleaning, and/or approved mechanical method to achieve clean, sound, and profiled concrete. When logistics permit, prepare concrete in accordance with SSPC-SP 13/NACE No. 6. “Surface Preparation of Concrete.”

Steel: Before preparing steel, please inspect and remove oil, grease, or other contaminants - “Solvent Cleaning” (SSPC-SP1) may be required. Abrasive blasting (or other approved mechanical methods) must be used in order to achieve a clean surface with a minimum profile of 3 mils. To prevent flash rusting, consider the use of an Epoxytec recommended holding primer.

Property	Cure Time	ASTM	Units
Gel time (60g Mass)		C881	14 mins
Tack Free Cure		D2371	3 hrs
Working time			30 mins
Compressive Strength	7 Day	D695	6,118 psi
Compressive Modulus	7 Day	D695	105,800 psi
Bond Strength	14 Day	C882	1,635 psi
<i>All Tests Completed at 75 F (24 C)</i>			

Safety

Use CPP Gel: Crack Injection for SMALL SPALL REPAIRS ONLY. A deeper or larger mass than recommended will generate excessive heat and may result in smoking, cracking and the material rising

Consult Safety Data Sheet (SDS) for all material safety information (Find at: Epoxytec.com). Consult safety manuals of all equipment utilized

Important! Although the technical details and recommendations contained in this data sheet correspond to the best of our knowledge and experience, all the above information must, in every case be taken as merely indicative and subject to confirmation after long-term practical applications; for this reason, anyone who intends to use the product must ensure beforehand that it is suitable for the envisaged application. In every case, the user alone is fully responsible for any consequences deriving from the use of the product. The sole liability of Epoxytec for any claims out of the manufacturer's use of sale of its products shall be for the buyer's purchase price.